

INFOPOST 200 WITH DOOR

REGISTERED
MODEL



- Metal case with rubber seals
- Aeration kit with filters
- Watertight transparent PMMA door, lockable with key
- Integrates connecting cables from below
- Stainless version available
- Screen attachment, VESA 100 standard

INFOPOST 200 WITHOUT DOOR



- Metal case for 19" to 25" touch screen
- Aeration kit with filters
- Integrates connecting cables from below
- Screen attachment, VESA 100 standard

211260	W 600 x D 160 x H 585 mm / W 23.62 x D 6.3 x H 23.03 inch	3 days	Assembled
211511	Inclined keyboard shelf W 636 x D 230 mm / W 25.04 x D 9.06 inch	3 days	Assembled

211261	W 600 x D 160 x H 585 mm / W 23.62 x D 6.3 x H 23.03 inch	3 days	Assembled
--------	---	--------	-----------

ADJUSTABLE SCREEN SUPPORT

This swivel bracket allows you to attach a flat screen to an aluminum profile. Ideal solution on a desk or workstation, this mount makes it possible to do without the foot of the screen and thus save space.

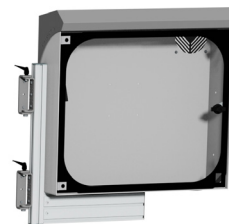
- Standard VESA 100 screen fixation.



SWIVEL ARM FOR INFOPOST 200



This accessory will allow you to fix your INFOPOST 200 laterally so that it can be rotated using the arm.



119430	Swivel bracket for flat screen	On stock	In kit
--------	--------------------------------	----------	--------

211562	Swivel arm for lateral mounting	On stock	In kit
--------	---------------------------------	----------	--------