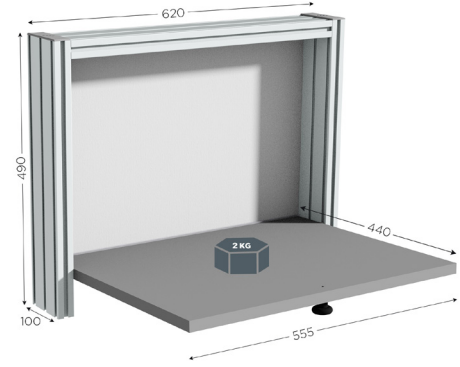


QUALIPOST 200A WALL-MOUNTED



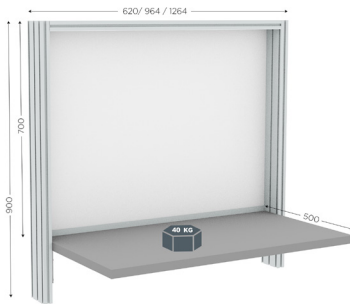
The indispensable **wall-mounted quality control station** |QUALIPOST 200A for space-saver.
The QUALIPOST® 200 can be fastened very easily to a wall and can be used as a standing-desk or seated.

- Stratified folding plate, with anti-shock edges on hinges
- Design: anodised aluminium structure which facilitates the attachment of accessories
- Reduced depth
- With a compartment for files, pens etc.
- Permissible load: 2 kg



514100	W 620 x D 440 x H 490 mm / W 24.41 x D 17.32 x H 19.29 inch with folding tray	3 days	Assembled
--------	---	--------	-----------

QUALIPOST 200B WALL-MOUNTED

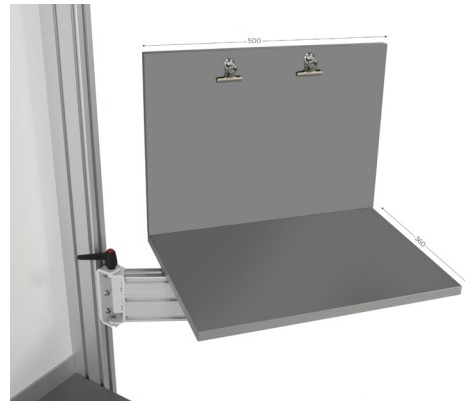


The indispensable **wall-mounted quality control station** |QUALIPOST 200B for space-saver.
The QUALIPOST® 200 can be fastened very easily to a wall and can be used as a standing-desk or seated.

- Stratified plate, with anti-shock edges on hinges
- Design: anodised aluminium structure which facilitates the attachment of accessories
- Reduced depth
- With a compartment for files, pens etc.
- Permissible load: 40 kg

516250	W 620 x D 500 x H 900 mm / W 24.41 x D 19.69 x H 35.43 inch with non-folding tray	3 days	Pre-mounted
516260	W 964 x D 500 x H 900 mm / W 37.95 x D 19.69 x H 35.43 inch with non-folding tray	3 days	Pre-mounted
516270	W 1264 x D 500 x H 900 mm / W 49.76 x D 19.69 x H 35.43 inch with non-folding tray	3 days	Pre-mounted

QUALIPOST 300C



- Aluminium pivoting arm
- Stratified plate and back panel
- Allowable load: 10 kg/22 lb
- **Delivered with 2 document clips**

513528	W 500 x D 360 x H 360 mm / W 19.69 x D 14.17 x H 14.17 inch pivoting wall-mounted, without drawer	5 days	In kit
--------	---	--------	--------