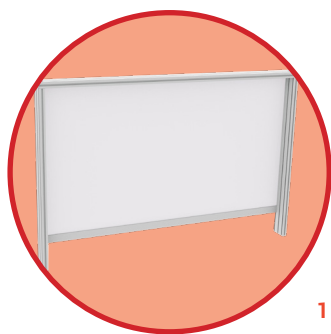


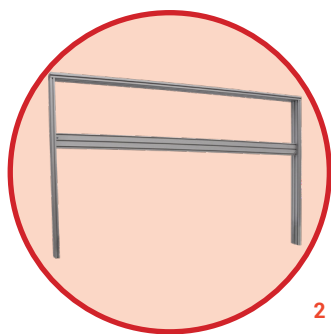
QUALIPOST 620 ERGO

Accessories

WORKSHOP FURNITURE



1



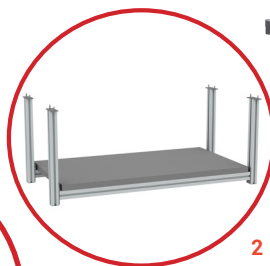
2



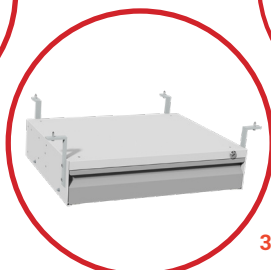
CODE	DESIGNATION	LEAD TIME	PACKING
1 516525	Lacquered white sheet steel rear bottom 964 x H 700 mm / W 37.95 x H 27.56 inch for QUALIPOST 620 and 650	10 days	Premounted
1 516535	Lacquered white sheet steel rear bottom 1264 x H 700 mm / W 49.76 x H 27.56 inch for QUALIPOST 620 and 650	10 days	Premounted
1 516545	Lacquered white sheet steel rear bottom 1564 x H 700 mm / W 61.57 x H 27.56 inch for QUALIPOST 620 and 650	10 days	Premounted
2 516524	Open rear bottom 964 x H 700 mm / W 37.95 x H 27.56 inch for QUALIPOST 620	10 days	Premounted
2 516534	Open rear bottom 1264 x H 700 mm / W 49.76 x H 27.56 inch for QUALIPOST 6	10 days	Premounted
2 516544	Open rear bottom 1564 x H 700 / W 61.57 x H 27.56 inch for QUALIPOST 620	10 days	Premounted



1



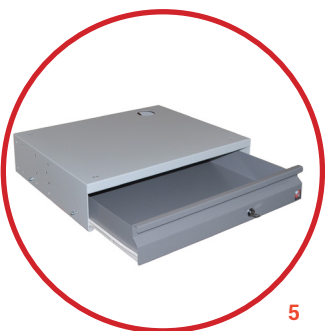
2



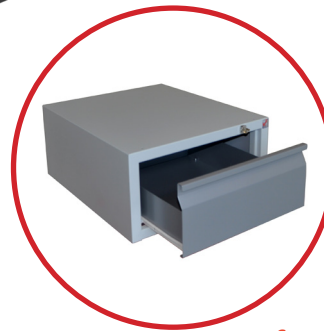
3



4



5



6

CODE	DESIGNATION	LEAD TIME	PACKING
1 541056	Set of 4 swivel roller wheels with brake Ø 75 mm / Ø 2.95 Inch M8 axis	On stock	In batch
2 516526	Lower shelf QUALIPOST 620 ERGO 555 x P 500 x H 415 mm / W 21.85 x D 19.69 x H 16.34 inch (for station L 900 mm / L 35.43 Inch)	10 days	Premounted
2 516536	Lower shelf QUALIPOST 620 ERGO 900 x P 500 x H 415 mm / W 35.43 x D 19.69 x H 16.34 inch (for station L 1200 mm / L 47.24 Inch)	10 days	Premounted
2 516546	Lower shelf QUALIPOST 620 ERGO 1200 x P 500 x H 415 mm / W 47.24 x D 19.69 x H 16.34 inch (for station L 1500 mm / L 59.05 Inch)	10 days	Premounted
3 511220	Set of 4 fixing brackets for drawer on QUALIPOST 620 and 2200	15 days	In batch
4 531200	Keyboard drawer 556 x P 450 x H 125 mm / W 21.89 x D 17.72 x H 4.92 inch	5 days	Assembled
5 531205	Box with lock 556 x H 125 mm / W 21.89 x H 4.92 inch	5 days	Assembled
6 531206	Housing with lock for QUALIPOST 600 556 x H 275 mm / 600 W 21.89 x H 10.83 inch	5 days	Assembled