

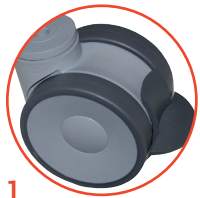
5S VISUAL CABINET

5S Workshop storage cabinet



- Steel base
- Cupboard with an aluminium structure
- Laminated wood walls
- Shelves height adjustable
- Doors with transparent PMMA front panels
- Closing of the doors by cremone (supplied with 2 keys) or code lock (without service key)

Accessories



	CODE	DESIGNATION	LEAD.	PACKING
A	680160	W 930 x D 550 x H 1970 mm / W 36.61 x D 21.65 x H 77.56 inch version 4 shelves with cremone lock (2 keys provided)	3 days	Premounted
A	680161	W 930 x D 550 x H 1970 mm / W 36.61 x D 21.65 x H 77.56 inch version 3 shelves and perforated bottom with cremone lock (2 keys provided)	3 days	Premounted
A	680162	W 930 x D 550 x H 970 mm / W 36.61 x D 21.65 x H 38.19 inch version 2 shelves with cremone lock (2 keys provided)	3 days	Premounted
B	680163	W 930 x D 550 x H 1970 mm / W 36.61 x D 21.65 x H 77.56 inch version 4 shelves with code lock (without service key)	10 days	Premounted
B	680164	W 930 x D 550 x H 970 mm / W 36.61 x D 21.65 x H 38.19 inch version 2 shelves with code lock (without service key)	10 days	Premounted
1	541052	Set of 4 swivel roller wheels with brake Ø 100 mm / Ø 3.94 Inch, 80 mm rise	On stock	In batch
2	141415	Customizable curved sign W 600 x H 200 mm / W 23.62 x H 7.87 Inch with mounting bracket	On stock	In kit
3	680155	Additional shelf W 835 x D 430 mm / W 32.87 x D 16.93 Inch for 5S VISUAL CABINET (Load capacity 40 kg)	5 days	Assembled