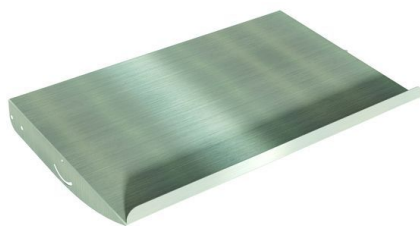

STAINLESS STEEL Adjustable tilting shelf



Reference : 15617

Description :

Additional adjustable tilting shelf

Benefits :

- Additional shelf that is simple and quick to install and can support a load of 50 kg.
- Tilting for better visibility of components and easier work for operators.
- Compatible with mobile bin trolleys.
- Equipped with an ideal fall arrest edge to hold plastic bins securely.

Technical specifications :

Product Name	STAINLESS STEEL Adjustable tilting shelf
SKU	15617
Weight (kg)	1.000000
Application	Accessoires desserte, Logistique
